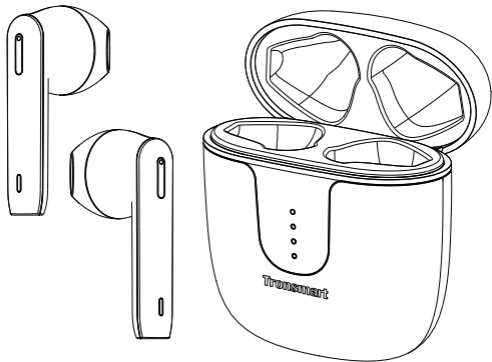


Tronsmart

UPORABNIŠKI PRIROČNIK



Onyx Ace
Brezžične slušalke



Qualcomm®
aptX™

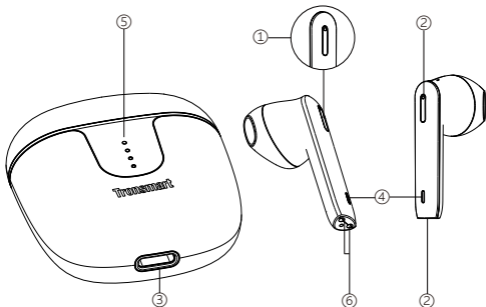
Hvala, ker ste izbrali brezžične slušalke Tronsmart Onyx Ace. Pred uporabo natančno preberite navodila in jih shranite za nadaljnjo uporabo.

Vsebina paketa

- 1 x brezžične slušalke Onyx Ace s polnilno postajo
- 1 x polnilni kabel
- 1 x garancijski list
- 1 x uporabniški priročnik

Pregled izdelka

- ① Multifunction touch area
- ② Mikrofon
- ③ USB-C vhod za polnjenje
- ④ Indikacijska lučka slušalk
- ⑤ Indikacijska lučka polnilne postaje
- ⑥ Kontakti za polnjenje



Prva uporaba

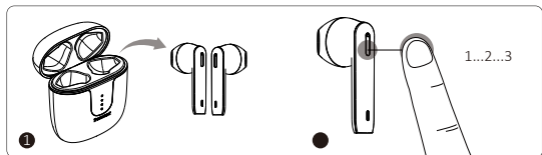
Obe slušalki postavite v ohišje za polnjenje in pred prvo uporabo popolnoma napolnite tako ohišje kot slušalki. Priporočeno polnjenje je 1-2 uri.



Vklop/Izklop

1. Slušalki se samodejno vklopijo, ko jih vzamete iz ohišja za polnjenje.

Če jih želite ročno vklopiti, tapnite in zadržite večnamensko območje na dotik obeh slušalkah 3 sekunde.

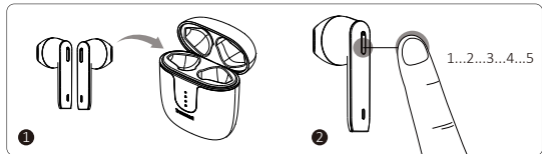


☀ Bela lučka utripa 1 sekundo (indikacijska lučka slušalk)

Vklop

2. Slušalki se samodejno izklopijo, ko jih postavite nazaj v ohišje za polnjenje.

Če jih želite ročno izklopiti, tapnite in zadržite večfunkcijsko območje na dotik obeh slušalkah 5 sekund.

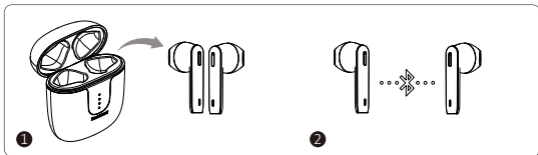


Flashing red for 1 second (Earphones' indicator)

Off

Bluetooth Pairing

1. True Wireless Stereo connection



Flashing white

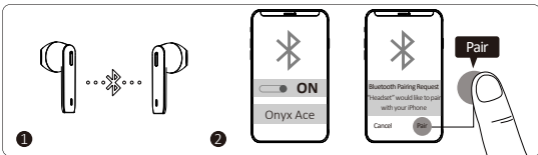
True Wireless Stereo pairing mode

Flashing white (Left earphone)
Goes off (Right earphone)

True Wireless Stereo connection is successful

2. Bluetooth connection

The earphones will enter pairing mode when they are turned on.



Flashing white (Left earphone)
Goes off (Right earphone)

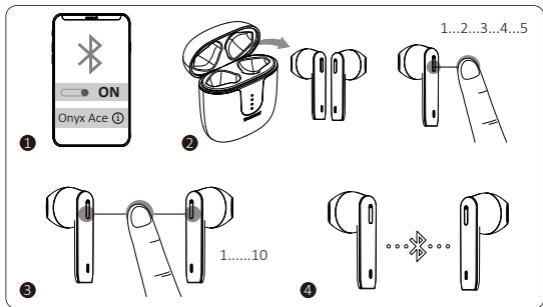
Pairing mode

Goes off (Both earphones)

Connected to a device

Reset

If you are experiencing issues with your earphones, such as failure of TWS pairing or functionality issues, you can try to reset your earphones.



1. Forget the 'Tronsmart Onyx Ace' in your device's Bluetooth list.

2. Take two earphones out of the charging case. Tap and hold the multifunction touch area for 5 seconds to turn them off.

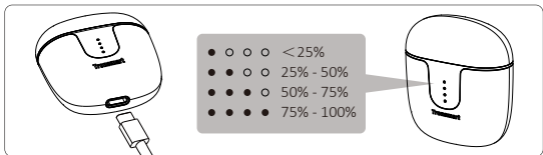
3. Tap and hold the multifunction touch area on the earphones for 10 seconds, until the white indicator flashes rapidly.

Note: You can reset the Left and Right earphones independently or at the same time.

4. The earphones have been reset to the default settings. Then connect to your device refers to the 'Bluetooth pairing' above.

Charging

Use the comes along with USB-C cable to charge.



Controls



L/R	Turn on manually	Tap and hold for 3 seconds
L/R	Turn off manually	Tap and hold for 5 seconds



L/R	Play/Pause	Tap twice
R	Next track	Tap and hold for 2 seconds
L	Previous track	Tap and hold for 2 seconds
R	Volume +	Tap once
L	Volume -	Tap once



L/R	Answer/End a phone call	Tap twice
L/R	Reject a phone call	Tap and hold for 2 seconds



L/R	Activate voice assistant	Tap three times quickly
-----	--------------------------	-------------------------

Note: Turn off automatically

The earphones will turn off automatically after 5 minutes if they have not paired with any device via Bluetooth. When in low battery, they will turn off automatically as well.

Specifications

Model	Onyx Ace
Chip	Qualcomm® QCC3020
Bluetooth version	5.0
Bluetooth profile	HFP/HSP/AVRCP/A2DP
Audio codec	aptX, AAC, SBC
Connection distance	Up to 15 meters / 50 feet
Driver	13 mm

Microphone sensitivity	-42dB ± 1dB
Audio frequency range	20 - 20K Hz
Playtime (varies by volume level and content)	Earphone: up to 5 hours (50% volume)
	Charging case: up to 24 hours (50% volume)
Battery	Earphone: 40 mAh
	Charging case: 400 mAh
Input	Charging case: 300mA max.
Charging time	Earphone: about 1 hour 20 minutes
	Charging case: about 1 hour 30 minutes
Standby	Earphone: about 60 hours
	Charging case: 90 days
Dimension	Earphone: 39 x 16.5 x 16.8 mm / 1.54 x 0.65 x 0.66 inches
	Charging case: 48 x 23 x 57.5 mm / 1.89 x 0.9 x 2.26 inches
Weight	Earphone: about 4 g / 0.14 oz
	Charging case: about 37 g / 1.31 oz

Care and Maintenance

1. If this product is not used for a long period of time, it's recommended to recharge it at least once a month to extend its life and maintain the normal use performance.
2. Keep the product in a dry location.
3. Do not dispose this product in fire as batteries may explode or leak.
4. To clean the product, use a lightly dampened cloth in water to clean the exterior in-case it gets dirty.
5. Do not disassemble this product. It contains no user serviceable parts.

Warranty Information

Your 'Tronsmart Onyx Ace True Wireless Earphones', is warranted to the original owner for 1 year from the date of purchase against defects in material and workmanship under normal use and service. Tronsmart is not responsible for the accidental use of this product and its liability will not exceed the purchase price of the product. If you have any problems while using the product, please do not hesitate to contact our customer support team at support@tronsmart.com.

FCC Statement

This device complies with Part 15 of the FCC Rules. Operation is subject to the following two conditions:

(1) this device may not cause harmful interference, and (2) this device must accept any interference received, including interference that may cause undesired operation.

NOTE: This equipment has been tested and found to comply with the limits for a Class B digital device, pursuant to part 15 of the FCC Rules. These limits are designed to provide reasonable protection against harmful interference in a residential installation. This equipment generates uses and can radiate radio frequency energy and, if not installed and used in accordance with the instructions, may cause harmful interference to radio communications. However, there is no guarantee that interference will not occur in a particular installation. If this equipment does cause harmful interference to radio or television reception, which can be determined by turning the equipment off and on, the user is encouraged to try to correct the interference by one or more of the following measures:

- Reorient or relocate the receiving antenna.
- Increase the separation between the equipment and receiver.
- Connect the equipment into an outlet on a circuit different from that to which the receiver is connected.
- Consult the dealer or an experienced radio/TV technician for help.

Changes or modifications not expressly approved by the party responsible for compliance could void the user's authority to operate the equipment.

Qualcomm aptX and Qualcomm cVc are products of Qualcomm Technologies, Inc. and/or its subsidiaries.

Qualcomm is a trademark of Qualcomm Incorporated, registered in the United States and other countries. aptX and cVc are trademarks of Qualcomm Technologies International, Ltd., registered in the United States and other countries.

RF warning statement:

The device has been evaluated to meet general RF exposure requirement.

The device can be used inportable exposure condition without restriction.