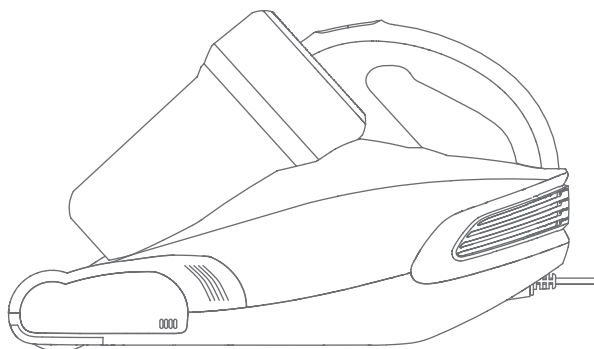


# JIMMY



JV35  
Ročni sesalnik za pršice

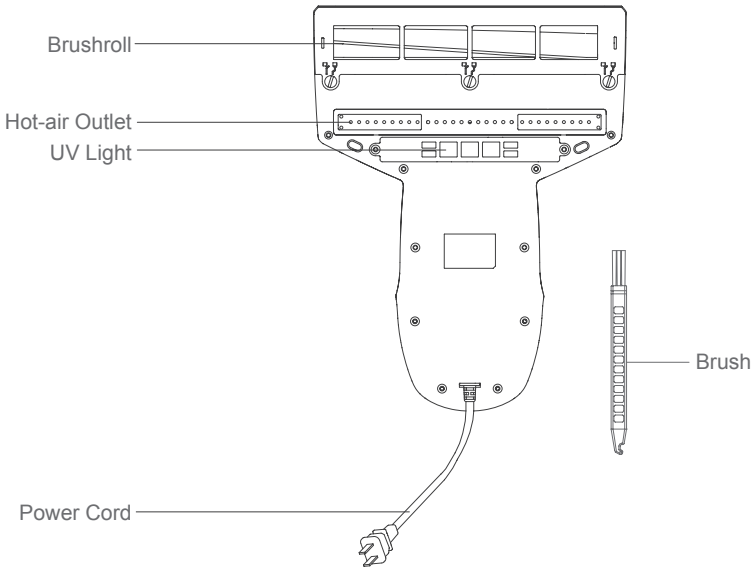
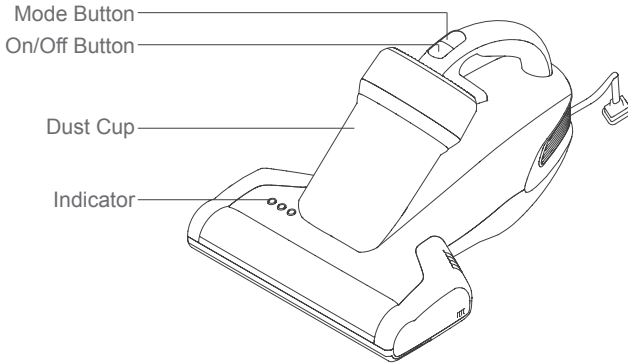
Uporabniški priročnik

# Products Installation

## Unpacking

Open the package, take out all accessories and machine from the package, save the outer package for the purpose of future maintenance and repair.

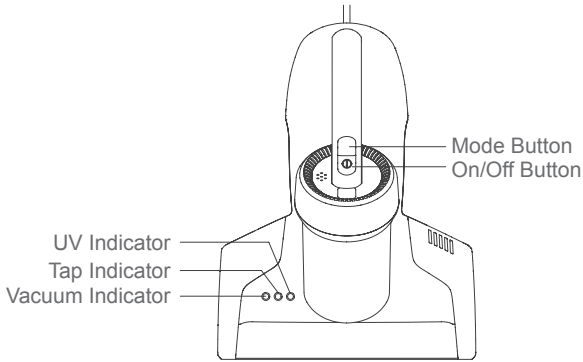
## Parts Name



## Packing List

Vacuum Cleaner	Filter	Brush	User Guide
1	1	1	1

## Use of the Product



### Vacuumping + Tapping + UV Mode

When turn on vacuum cleaner, the machine is in vacuumping + tapping + UV mode, all indicators light up.

### Vacuumping + Tapping Mode

When the machine is in vacuumping + tapping+UV mode, press mode button once, machine changes to vacuumping + tapping mode and relevant indicators light up.

### Vacuumping + UV Mode

When the machine is in vacuumping + tapping mode, press mode button once, machine changes to vacuumping + UV mode and relevant indicators light up.

When machine is in vacuumping + UV mode, press mode button once, the vacuum cleaner goes back to vacuumping + tapping + UV mode. The three modes cycles in turn by pressing mode button. Turn off the machine by pressing on/off button.

Notice:

- 1.For safety reasons, the UV light only works within 5cm above object as well as less than 30 inclination degrees. Otherwise, the UV light will automatically turn off.
- 2.Do Not touch the air outlet off the bottom of the machine in case of hand scald.

# Cleaning and Maintenance

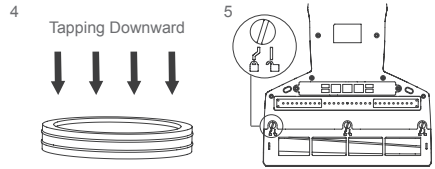
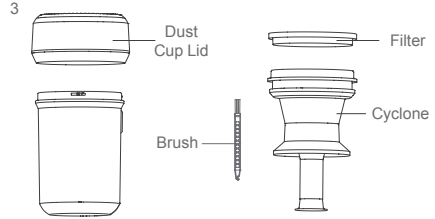
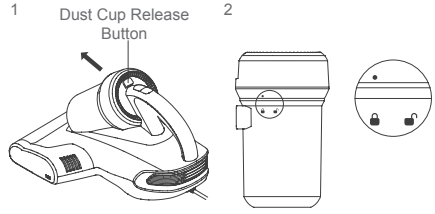
Notice:

1. Filters are available at dealers.
2. It is recommended to clean the dust cup after each use. when the filter is blocked due to excessive dust accumulation, it needs to be cleaned and replaced if necessary.

## Dust Cup Cleaning

1. Turn off the machine and unplug the power cord. Then press the release button and lift upward (Figure 1).
2. Twist dust cup lid anticlockwise (Figure 2) and remove it from dust cup to clean (Figure 3).
3. Do Not tap the filter in reverse in case of dust clog. Clean filter and cyclone regularly for better use.
4. After cleaning, assemble parts in reverse order. Do Not miss the filter, filter missing can cause product failure.

Notice: Use water or neutral reagents to clean dust cup and wipe with dry cloths. The filter cannot be washed. Make sure the filter and dust cup are completely dry before another use.

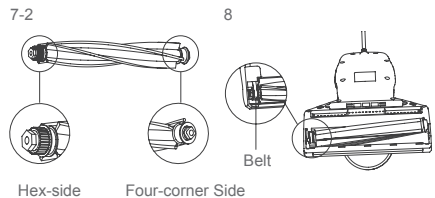
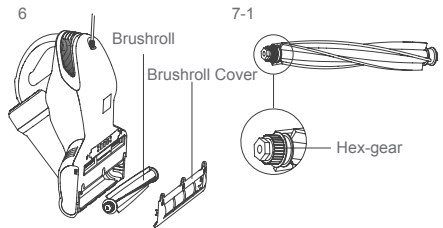


## Brushroll Cleaning

Turn off the machine and unplug the power cord, rotate the lock knob with a coin or flat-blade screwdriver from locked position to unlock position (Figure 5) to remove the cover and roller brush (Figure 6).

After cleaning, snap the hex-gear side into the base first (Figure 7) and press the other side (Figure 8). Install the cover in reverse order of removing.

Notice: For safety reasons, please turn off the machine and unplug power cord before cleaning brushroll.



## UV Light Maintenance

Turn off the machine and unplug the power cord , wipe the UV light with dry cloths.

Notice: Turn off the machine and unplug the power cord before cleaning UV light in case of electric shock.

## Maintenance and Storage

- 1.Please clean dust cup and filter after each use for further use. It is recommended to replace a filter after 30-50 hours of working time(depending on specific situation) for better use.
- 2.Any paper, lead glass, plastic will greatly affect the effect of UV light. Please wipe and clean the UV tube regularly for better use.
- 3.Do Not touch the UV tube as dirt will affect UV light effect.
- 4.Put the machine in cool and dry places if the machine is to be idled. Do Not leave it in direct sunlight or humid environment.

## Cautions

Please read this instruction manual carefully before use and keep it properly for future use.

Never leave the machine working without supervision.

Please turn off the power switch and unplug the power cord if the machine is to be idled. Do Not unplug the power cord with humid hand in case of electric shock.

Cut the power source in maintenance or off-service.

Keep the power cord away from sharp objects and do not drag the cord to move the machine in case of cord damage.

For safety reasons, please do not use the product to clean hot objects such as carbon, cigarette butts, sharp objects such as broken glass, corrosive liquids, flammable and explosive materials such as gasoline and alcohol. Otherwise it may cause product damage or fire.

Do not use this product to clean water or wet dust. Do Not operate it in humid places (such as bathroom, toilet, laundry room, etc.) to avoid malfunction.

Do Not place the machine near heating appliances or expose it to direct sunlight in case of fire hazard.

Keep this product beyond the reach of special individual such as children without adult's supervision.

Do Not operate this machine with suction port blocked in case of product damage.

The product has UV light, for safety reasons, Do Not look at the bottom of the machine when the power is on in case of ultraviolet rays harming.

Do Not apply this product to plants. Excessive use of UV may cause object damage.

Do Not sit on this product in case of personal injury and product damage.

Do Not remove the brushroll cover or force the cover outward when the machine is powered on for safety reasons.

This product can ONLY use for cleaning of textiles such as mattresses, blankets, pillows, sofas, etc.

If the power cord is damaged, please ask for professional help of the manufacturer and other professionals for safety reasons.

## Trouble Shooting

If fault remains after adopting the following solutions, contact after sale service or local distributor immediately.

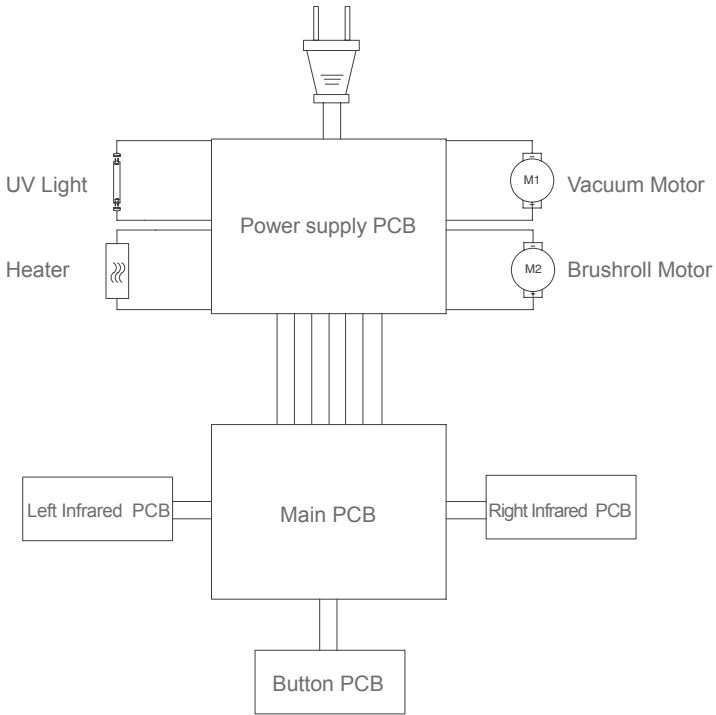
Problems	Possible Reasons	Solution
Power Failure	Power cord is not firmly inserted.	Insert the power cord firmly.
	No power on socket.	Check the socket.
	Power switch not pressed.	Press the On/Off button.
Low suction power	Suction port clogged.	Clean up suction port.
	Dust accumulation on filter.	Clean up the filter.
	Dust accumulation on cyclone.	Clean up cyclone.
	Dust accumulation on filter.	Clean up filter.
UV tube failure	The UV function is automatically off for safety reasons or weak reflection of object.	The UV function operates on the condition of less than 5CM height from the object.
	The machine operates on the same position for a long time.	Move the machine forward and backward
	The machine is placed upright.	Machine tilted no more than 30 degrees.
	Sensor window is contaminate.	Clean the sensor window with a half-dry cloth.
	UV light damage.	Contact after-sale service.
Automatically turned off	Dust cup full.	The machine will automatically turn off to prevent the motor under long operation. If the machine automatically turned off , please clean up the dust cup and filter, unplug power cord and reuse if after 2 hours.
	Suction port clogged.	
	Filter blocked.	
Brushroll failure	Brushroll tangled with foreign matter.	Remove the cover and clean up brushroll according to user guide.
	Belt broken.	Remove the cover according to user guide and check the belt. If broken, contact after-sale to repair.

# Product Specification

## Parameter

Model	JV35
Rated voltage	220V-240V~
Rated frequency	50Hz
Rated power	700W

## Circuit Diagram



## Manufacturer Information

Manufacturer	Kingclean Electric Co., Ltd
Address	No.1 Xiangyang Road, Suzhou New District, Jiangsu Province 215009,China

## Disposal

The machine, accessories and packaging should be sorted for environmental-friendly recycling.



Do not dispose of the machine into household waste!

Only for EC countries: According to the European Guideline 2012/19/EU, machine that are no longer usable, and according to the European Guideline 2006/66/EC, defective or used battery packs/batteries, must be collected separately and disposed of in an environmentally correct manner.

Subject to change without notice.

## Warranty Information

This product enjoys one year warranty for the machine service starting from the date of purchase.

Excluded from the guarantee is normal wear, commercial use, alterations to the appliance as purchased, cleaning activities, consequences of improper use or damage by the purchaser or a third person, damage, that can be attributed to external circumstances or caused by the batteries.





# JIMMY



Contact us -we'll get back within 1 business day.



Web:[www.jimmyglobal.com](http://www.jimmyglobal.com)  
Email:[support@jimmyglobal.com](mailto:support@jimmyglobal.com)